



MTC INFRA PRIVATE LIMITED, 1ST FLOOR, WE WORK, RAJAPUSPHA SUMMIT, NANAKRAMGUDA RD, FINANCIAL DIST, HYDERABAD - 500032

Ph - 82200 01959  
63844 63896

[info@mtcinfra.in](mailto:info@mtcinfra.in)

[www.mtc-infra.com](http://www.mtc-infra.com)

CHENNAI / BANGALORE / HYDERABAD / TIRUPUR



01

INTRODUCTION

09

SERVICES

15

PROJECTS - OFFICES

PROJECTS - INSTITUTIONS

RETROFITS

CLIENTS

Table of

# CONTENTS

21

28

34





## OUR PHILOSOPHY

“TOUCHING LIVES THROUGH SPACE”



## ABOUT US

MTC Infra is a one – stop solution for all your architectural needs. We operate with a strong code of ethics that translates into highly exclusive and innovative space.

We believe in creating awe-inspiring solutions for every client, by taking into account – their needs and their lifestyle. Our clients' are our greatest assets and their happiness and satisfaction, our ultimate goal.



services

01

CIVIL

02

INTERIOR

13

MEP

24

RETROFITS





# CIVIL SERVICES

A good design is functional and well made while also being emotionally resonant and can withstand the test of time. At MTA, We believe in providing innovative design solutions using new age technology to meet the needs of the client with an emphasis on sustainable design which is environmentally responsible and brings a balance between the natural and built environment.



01





# INTERIOR SERVICES

The essence of interior design is people and how they live .In MTA, we believe in designing with sensitivity to provide a high quality environment which is also emotionally resonant. Each design is unique and is devised for the client's personality, lifestyle and needs while also providing a range of styles from contemporary to a traditional touch to suit the tastes of the client

02





03

# MEP SERVICES

Mechanical, Electrical, Plumbing, and Fire system designs are the lifelines of any building, and it is important they are developed with utmost accuracy and perfection. Our MEP design validation services provide sustainable solutions for projects across industries such as Hospitals, Commercial Buildings, Industrial and others.

Our engineers with diverse skills and extensive domain expertise create MEPF BIM models and validate these models for constructability, performance, and maintenance of the building. Our familiarity with various codes such as IPC, ASHRAE, NFPA and the ability to follow Client/industry specific Drafting standards ensures flexible solutions for the customers and assures efficient deliveries.







# RETROFITS

House Renovation is a tedious task considering the average time frame it might take for the tasks to be completed. We, at MTC INFRA, are excellent at home renovations and home interior designs. We carry out tasks with professional interior designers at a faster pace. We are excellent at Home renovation works such as Kitchen remodelling, Bathroom renovation, Bedroom remodelling and Living room renovation. We are one stop solution for home renovation contractors in Chennai. Experience the environmental changes we bring to your home..





CORPORATE  
OFFICES





BANCASELLA 30,000sqft

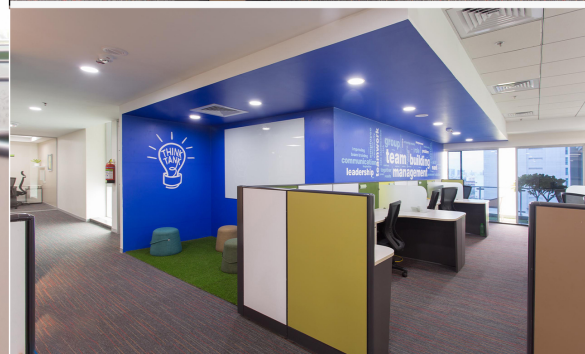




SIFY

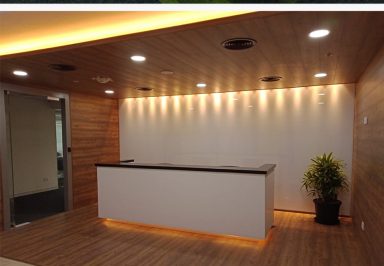
25,866 SORT





OLAM 5TH FLOOR 12,500sq.ft





TVS 25,000sqft





JAY JAY MILLS

25,000sqft







HCL 37,000sqft





CSS CORP 10.315 SO.FT



The background features a complex, low-poly geometric pattern of white and light grey facets. The facets are arranged in a way that creates a sense of depth and movement, with some areas appearing to be illuminated from below, casting soft, warm orange and yellow glows. The overall effect is clean, modern, and architectural.

INSTITUTIONS









PATASHALA 20,000sq.ft



RETROFIT & HANDCRAFTED RESIDENCE

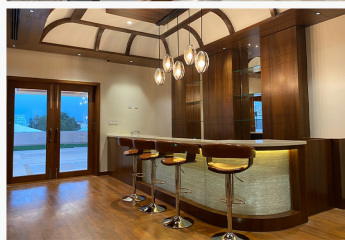




 **ECO TERRE** 7,000 SQ.FT.







TIRUPUR RESIDENCE

25,000  
SQ.FT.

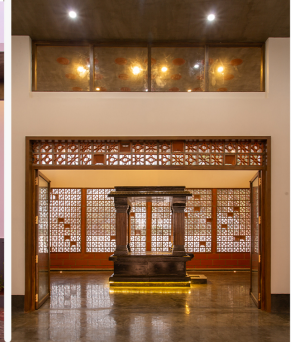




HILLTOP VILLA

12,000 SQFT





**SIRUSH RESIDENCE**

4,000 SQ. FT.

Shriram Properties And Infrastructure Pvt LTD

"We are satisfied with the work. wish them all success in their future ventures"

CDM

"Multitechcorporation have completed the work to our satisfaction within the stipulated time limit. we wish multitechcorporation all success in the future ventures"

Sify

"Satisfactory completion of interior works by multitech corporation"



Shriram Properties And Infrastructure Pvt LTD



Karthikeyan Deventhran  
Director, CDM



COO  
Sify

Hatsun Agro Product LTD

"The work performed by the MTC team has been satisfactorily completed and is up to our expectation"

TNPL

"They have completed the work to our satisfaction we wish them success in their endeavour"

Sunil Kumar Gollapudi

"I am glad that the team lived up to the expectations and completed the project on schedule. Also thanks for completing the project on a very tight schedule without any compromise in quality"



Suriendran  
Regional Manager, Hatsun Agro Product LTD



TNPL  
Dy Manager (Estate)



Manager-finance & Shared service,  
Olam

# CLIENTELE

